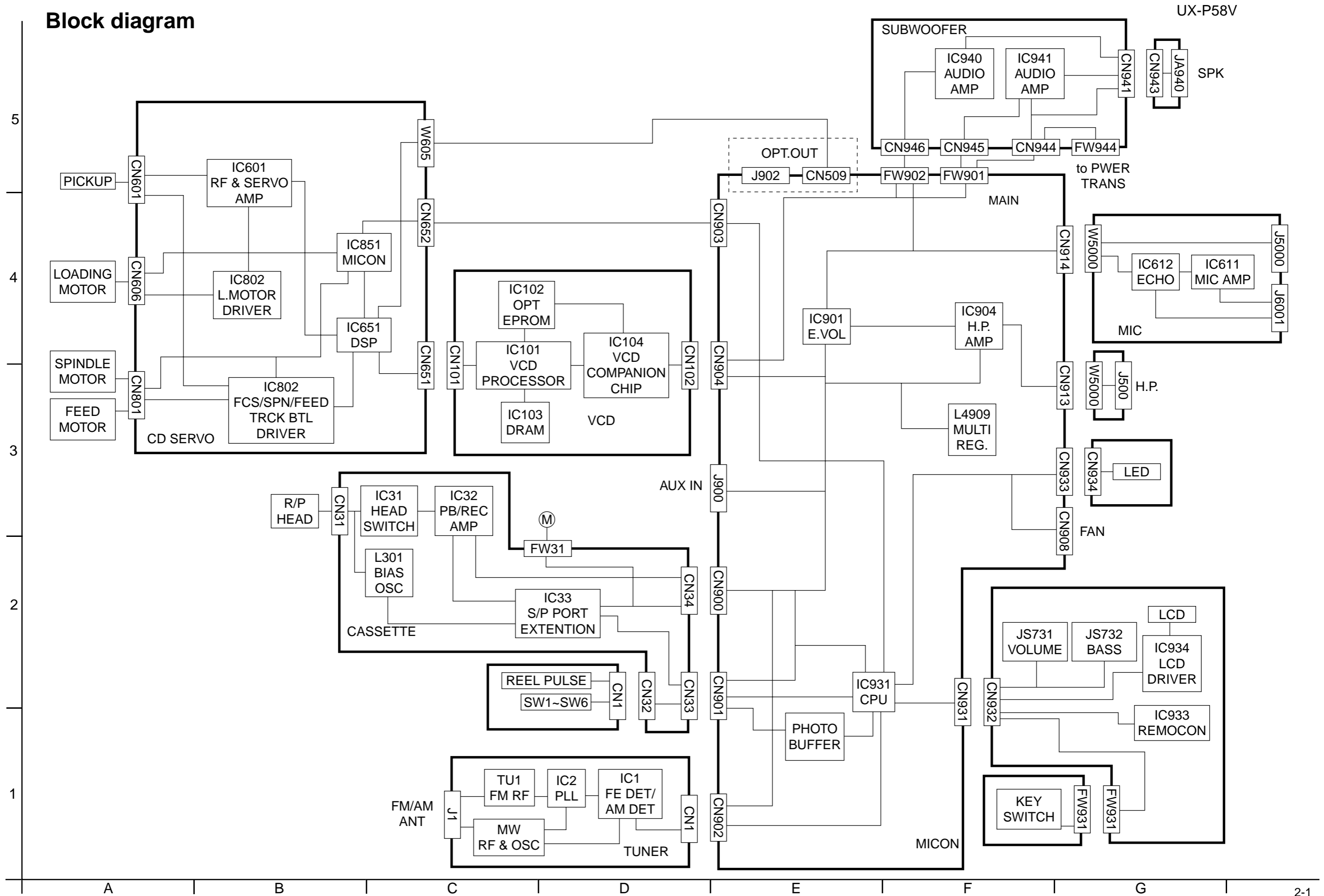


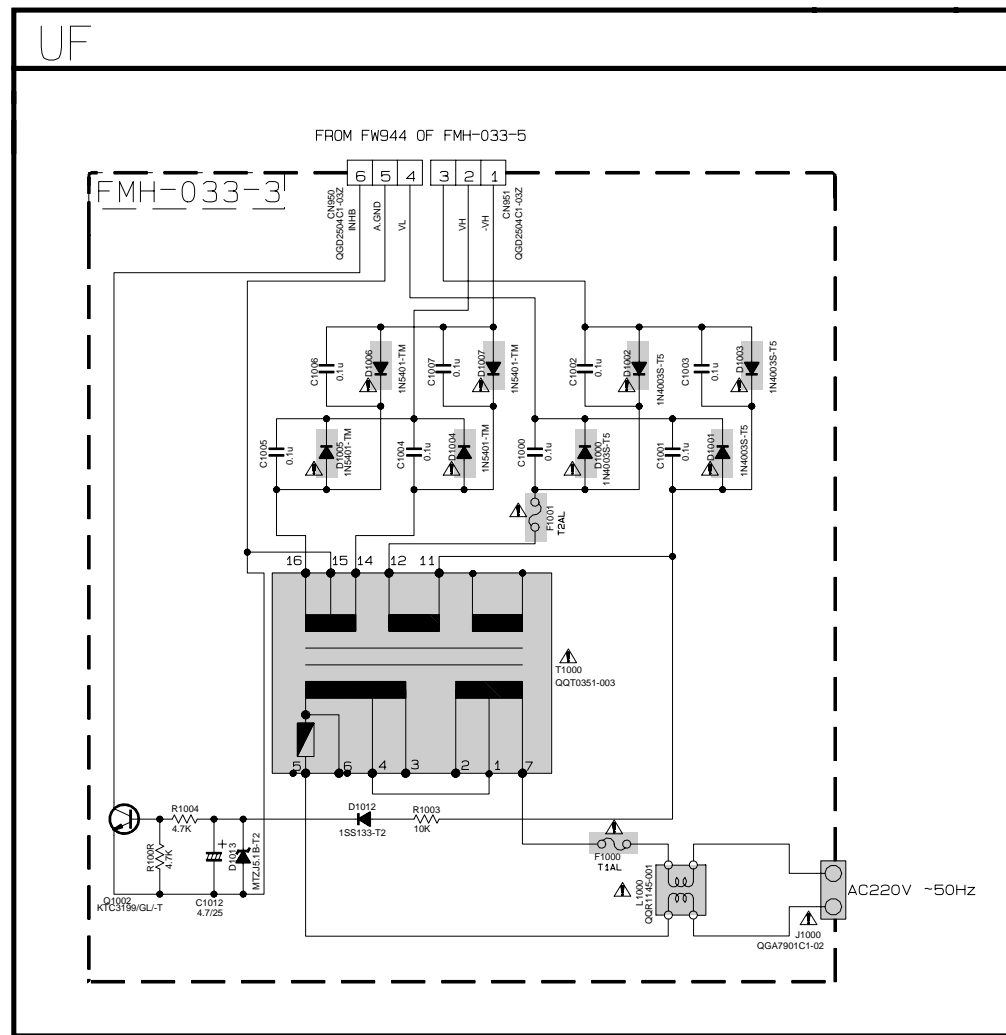
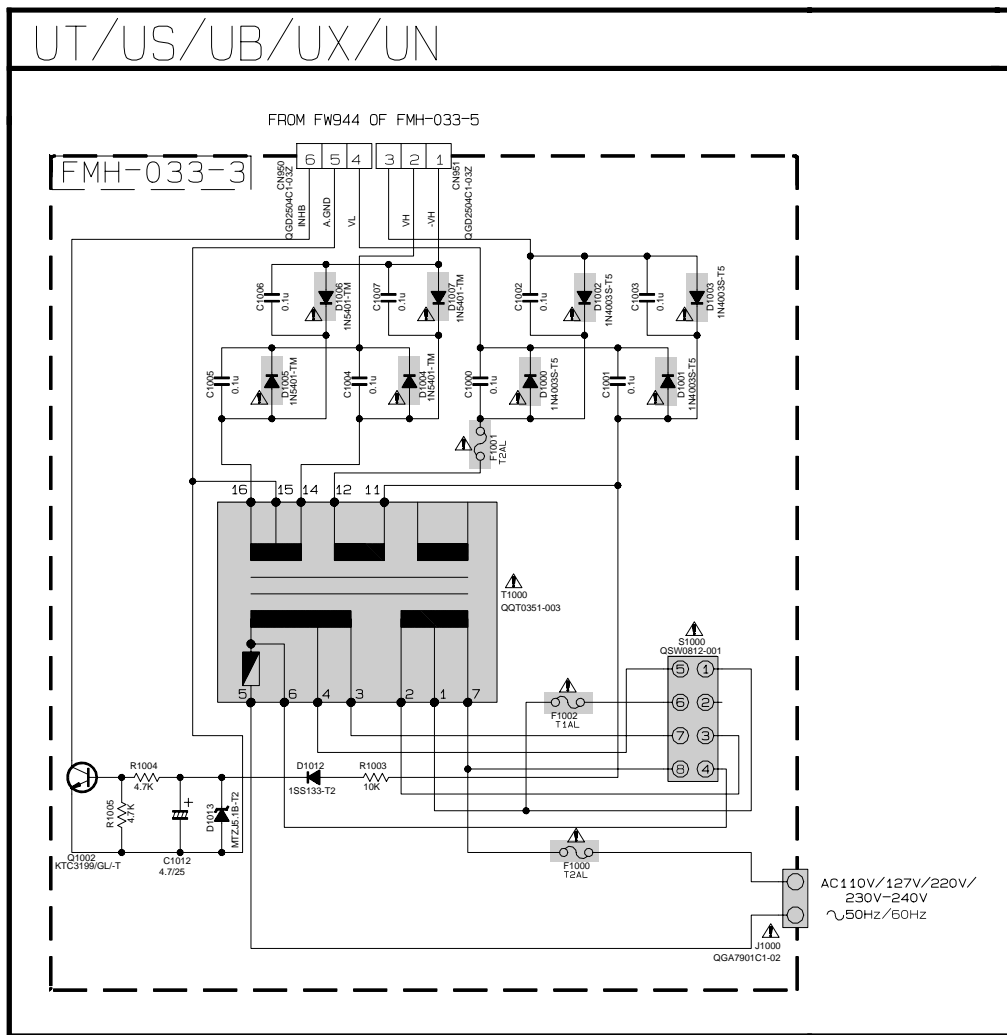
Block diagram



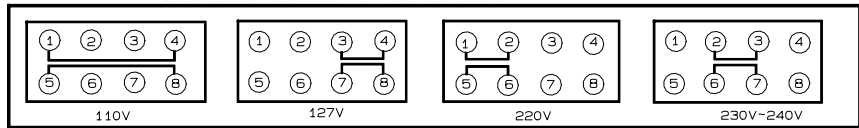
Standard schematic diagrams

■ Trans section

POWER SUPPLY BLOCK



VOLTAGE SELECTOR LOCATION



NOTES

- VOLTAGES ARE DC-MEASURED WITH A DIGITAL VOLT METER OR OSCILLOSCOPE WITHOUT INPUT SIGNAL.
CONDITION --- CD STOP MODE
INSIDE BRACKET VALUES ARE OTHER FUNCTIONS
- UNLESS OTHERWISE SPECIFIED - RESISTORS ARE 1/8W ±5% CARBON RESISTOR.
ALL RESISTANCE VALUES ARE IN OHM(Ω).
ALL CAPACITORS ARE CERAMIC CAPACITOR OR MYLAR CAPACITOR.
ALL CAPACITANCE VALUES ARE IN *F(*PF).
ALL INDUCTANCE VALUES ARE IN *H(*MH).
ALL E-CAPACITORS ARE SHOWN IN THE FORM OF CAPACITANCE (*F)/RATED VOLTAGE (V).

▲ Parts are safety assurance parts.
When replacing those parts make sure to use the specified one.

EXPLANATION OF OVERALL OF SCHEMATIC

MODEL : UX-P58V		
SHEET NUMBER	MODEL NUMBERS TO BE APPLIED	CIRCUITS DESCRIPTION
1/9	UX-P58V	. PRIMARY WITH MAINS TRANSFORMER
2/9	UX-P58V	. DC REGULATOR, AUDIO OUTPUT . EXTERNAL INPUT, SOURCE SELECTOR SWITCH
3/9	UX-P58V	. LCD DISPLAY/SYSTEM CONTROL/USERS KEY CONTROL
4/9	UX-P58V	. CD SERVO AND CD SYSTEM CONTROL . CD CHANGER MECHANISM CONTROL
5/9	UX-P58V	. TAPE DECK MECHANISM CONTROL . TAPE CIRCUITS SUCH AS PRE-AMP AND BIAS
6/9	UX-P58V	. TUNER RF/IF/FM MULTIPLEX
7/9	UX-P58V	. MIC AMPLIFIER WITH ALC, ECHO CONTROL CIRCUIT
8/9	UX-P58V	. VIDEO CONTROL CIRCUIT WITH MP3 FEATURE
9/9	UX-P58V	. SUBWOOFER BOARD

VERSION CODES
UB : HONG KONG
UF : CHINA
UN : INDONESIA
UT : TAIWAN
UX : SAUDI ARABIA
US : SINGAPORE AND UNIVERSAL EXCEPT ALL OF ABOVE

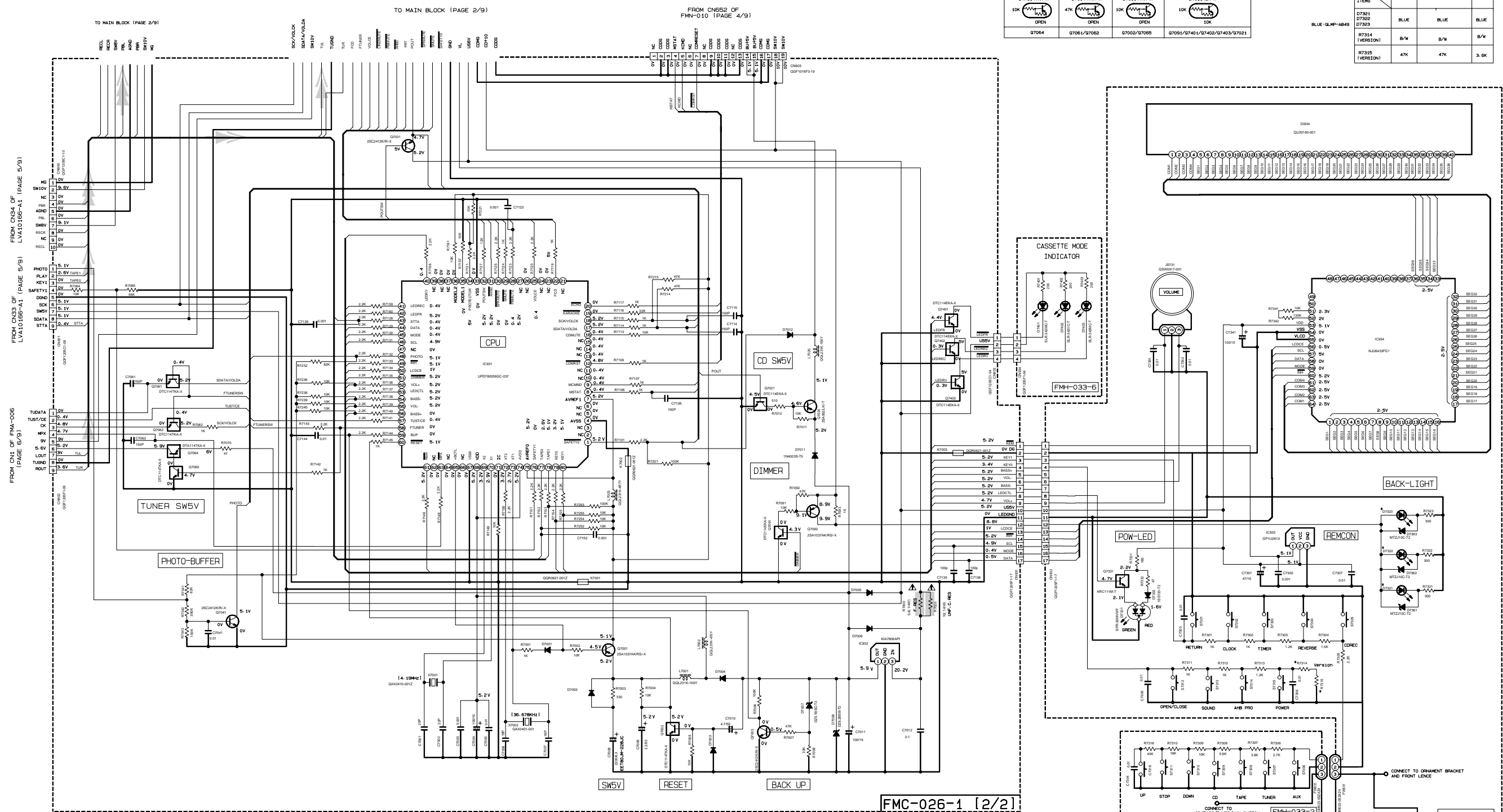
NOTE * MARK(*) IS TO SHOW DEVIATION IN VERSIONS.
DETAILS ARE EXPLAINED NEAR MARK.

Micon section

* MARK

VERSION	(UB)	(UF/AN/US/UT)	(UX)
D7301	BLUE	BLUE	BLUE
D7302	BLUE	BLUE	BLUE
D7303	BLUE	BLUE	BLUE
R7314 (VERSION1)	B/W	B/W	B/W
R7315 (VERSION1)	47K	47K	3.6K

DTA114TKA-X	DTC144TKA-X	DTC114TKA-X	DTC114EK-X
10K	47K	10K	10K
OPEN	OPEN	OPEN	10K
Q7064	Q7061/Q7062	Q7002/Q7065	Q7091/Q7401/Q7402/Q7403/Q7021



NOTES

- VOLTAGES ARE DC-MEASURED WITH A DIGITAL VOLT METER OR OSCILLOSCOPE WITHOUT INPUT SIGNAL.
CONDITION --- CD STOP MODE
- UNLESS OTHERWISE SPECIFIED:
ALL RESISTORS ARE 1/10W 45% METAL GLAZE RESISTOR.
ALL CAPACITORS ARE CERAMIC CAPACITOR OR MYLAR CAPACITOR.
ALL RESISTANCE VALUES ARE IN OHM(S).
ALL CAPACITANCE VALUES ARE IN nF (PpPpF).
ALL INDUCTANCE VALUES ARE IN mH (mHmH).
ALL E-CAPACITORS ARE SHOWN IN THE FORM OF CAPACITANCE (uF)/RATED VOLTAGE (V).
ALL DIODES ARE IN 1SS133-T2 UNLESS SPECIFIED.

Parts are safety assurance parts.
When replacing those parts make sure to use the specified one.

TUNER SIGNAL
TAPE SIGNAL

5
4
3
2
1

A B C 2-4 D E F G

CD-RW section

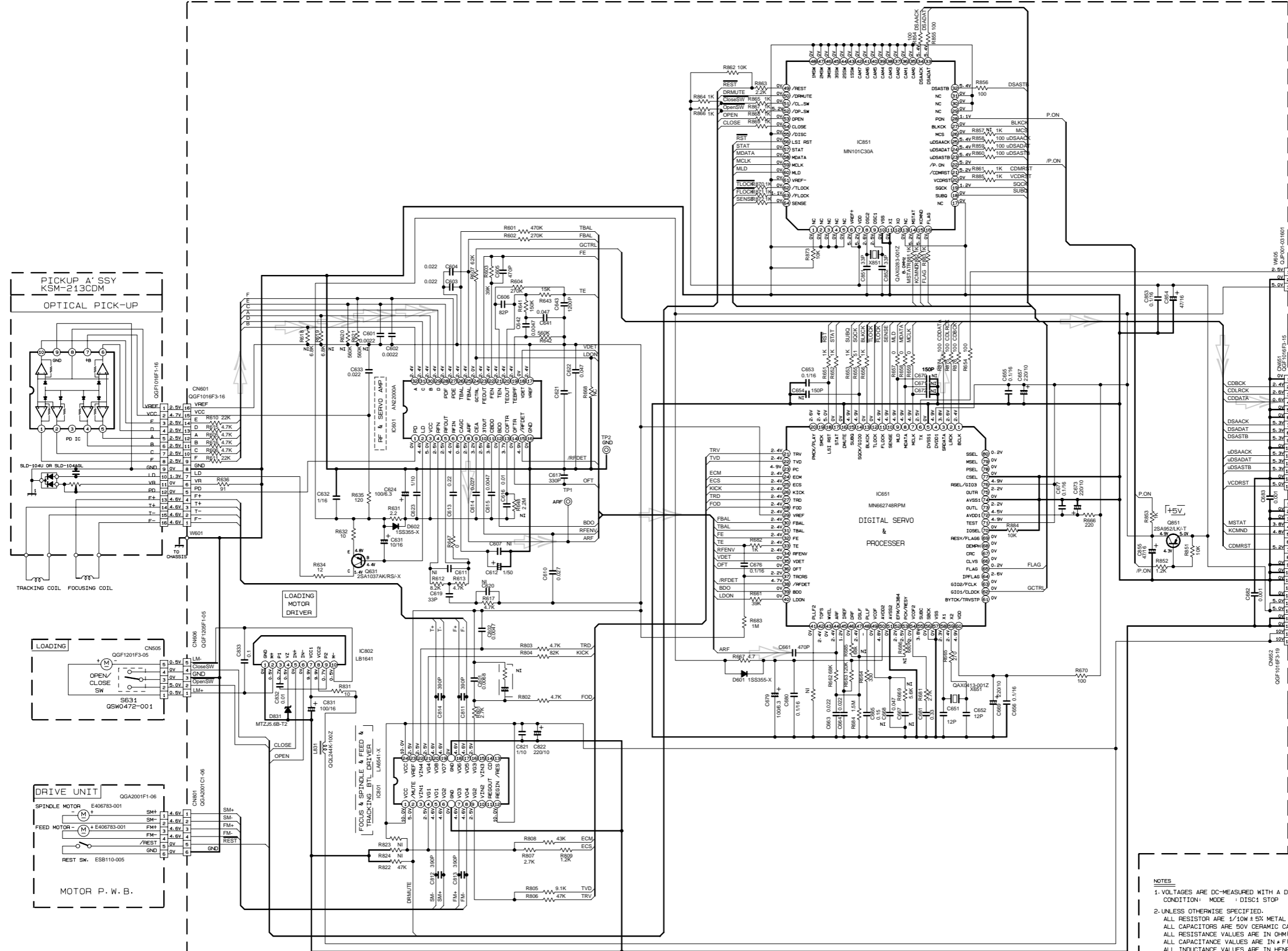
5

4

3

2

1



TO CN905 OF FMC-026-1 (PAGE 2/9)

TO CN101 OF FW-010BM (PAGE 7/9)

TO CN803 OF FMC-026-1 (PAGE 2/9)

CD/CD-RW SIGNAL

- NOTES**
1. VOLTAGES ARE DC-MEASURED WITH A DIGITAL VOLT METER
CONDITION: MODE : DISC1 STOP
 2. UNLESS OTHERWISE SPECIFIED:
ALL RESISTOR ARE 1/10W ± 5% METAL GLAZE RESISTOR.
ALL CAPACITORS ARE 50V CERAMIC CAPACITOR OR 50V MYLAR CAPACITOR.
ALL RESISTANCE VALUES ARE IN Ω(M(Ω)).
ALL CAPACITANCE VALUES ARE IN pF(P=PF).
ALL INDUCTANCE VALUES ARE IN HENRY(H).
ALL E. CAPACITORS ARE SHOWN IN THE FORM OF CAPACITANCE(μF)/RATED VOLTAGE (V).

FMN-010

A

B

C

D

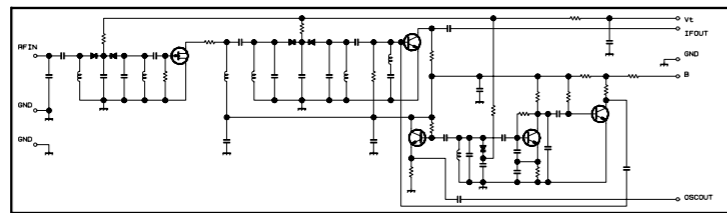
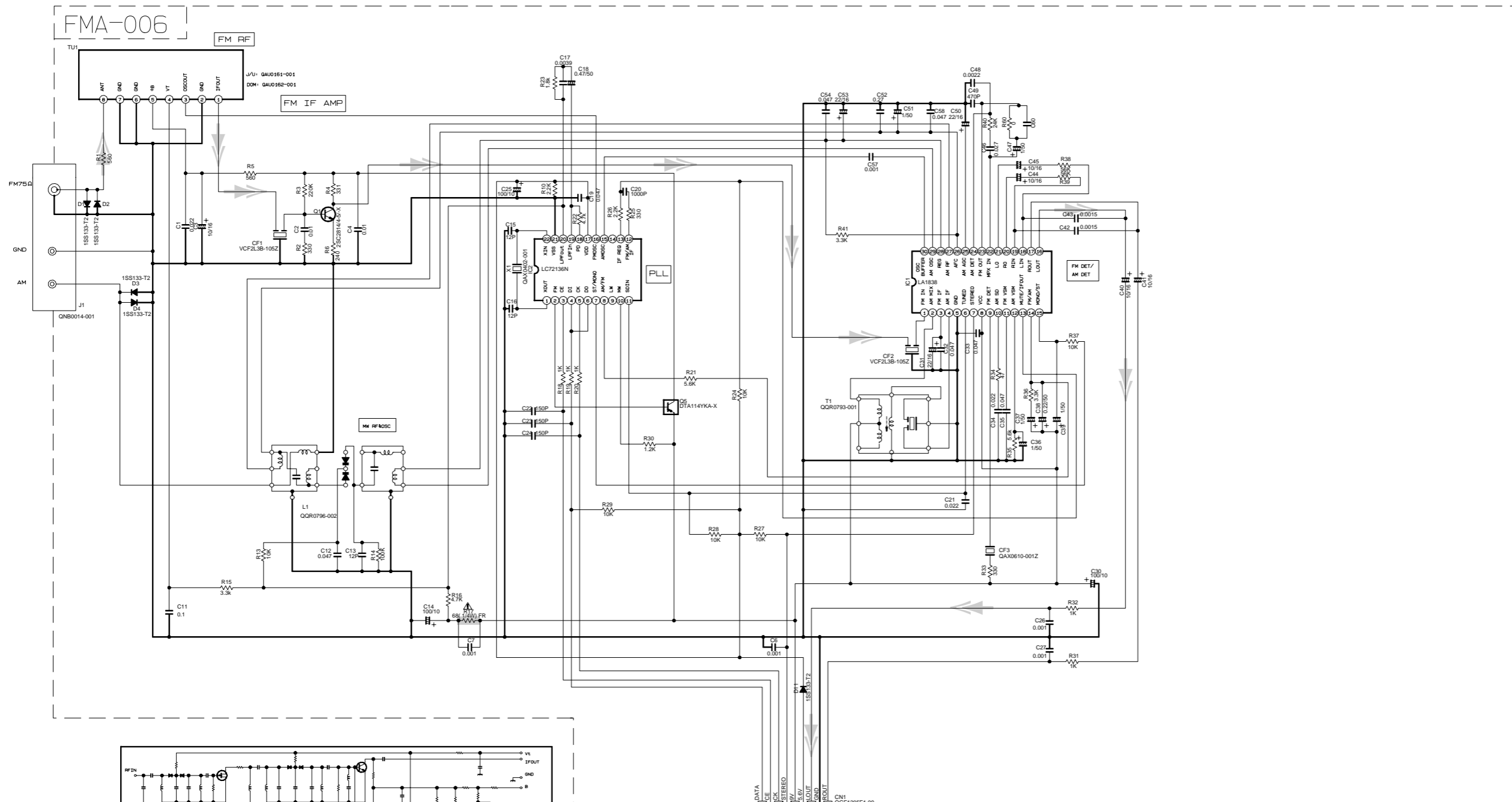
E

F

G

■ Tuner section

5
4
3
2
1



CONDITION	PIN NO.	1	2	3	4	5	6	7	8	9	10	11	12	13	14	15	16	17	18	19	20	21	22	23	24	25	26	27	28	29	30
IC1	FM NO SIGNAL	3.6	8.9	3.6	3.6	0	5.0	5.0	8.9	8.9	1.3	0.1	0	0.9	7.8	7.8	4.3	4.3	4.3	4.3	3.4	3.4	2.8	3.4	0	0	3.5	3.5	3.6	3.6	2.7
	FM 60dB STEREO	3.6	8.9	3.6	3.6	0	0	5.0	8.9	8.9	1.3	4.3	0	0.9	7.8	7.8	4.3	4.3	4.3	4.3	3.4	3.4	2.8	3.4	0	0	3.6	3.6	3.6	3.6	2.7
	AM NO SIGNAL	3.5	9.0	3.5	3.5	0	5.0	5.1	9.0	2.6	1.3	0	0	0.9	4.7	5.5	4.3	4.3	4.3	3.3	3.2	2.8	ust	0.7	0.7	0.7	3.6	3.6	3.6	3.6	2.1
IC2	FM NO SIGNAL	2.5	0	0	5.0	4.9	5.0	7.9	7.8	3.6	6.1	5.1	0	0	0	0	2.5	5.1	0.9	0.9	3.8	0	2.3								

▲ Parts are safety assurance parts. When replacing those parts make sure to use the specified one.

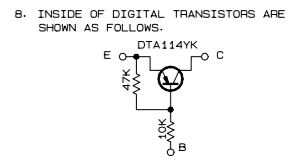
➡ TUNER SIGNAL

TO CN902 OF FMC-026-1 (PAGE 2/9)

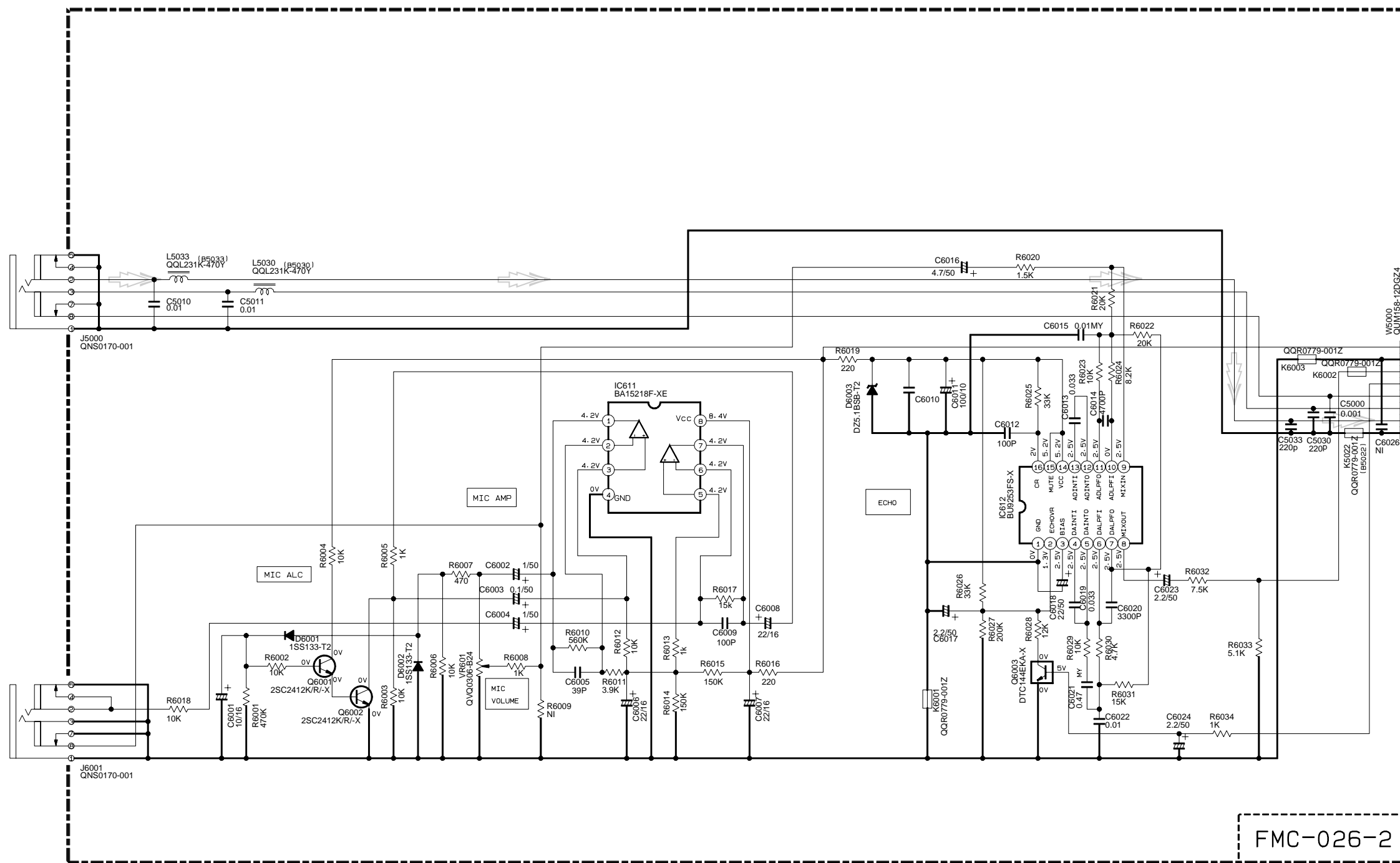
Tr. NO.		G1			G5		
PIN NO.		E	C	B	E	C	B
FM 87.5MHz NO SIGNAL	0	7.1	0.65	B.9	B.8	0	
AM 52KHz NO SIGNAL	0	0	0	9.0	0	B.9	

Tr. NO.		G2			G3			G4		
PIN NO.		E	C	B	E	C	B	E	C	B
AM 52KHz NO SIGNAL	0	0	0.7	0	0	0.7	0	3.6	3.6	0.7
AM 144KHz NO SIGNAL	0	0	0.3	0	0.3	0.3	3.6	3.6	3.6	

- NOTES
- VOLTAGES ARE DC-MEASURED WITH A DIGITAL VOLT METER.
 - ALL RESISTORS ARE 1/8W ±5% METAL GLAZE RESISTOR.
 - ALL RESISTANCE VALUES ARE IN OHM(Ω).
 - ALL CAPACITANCE VALUES ARE IN nF(PpF).
 - ALL E. CAPACITORS ARE SHOWN IN THE FORM OF CAPACITANCE (nF)/RATED VOLTAGE (V).
 - SI DIODES (▶) ARE ALL 1SS133-T THAT CAN BE CHANGED TO SIMILAR DIODE SUCH AS MA165 OR HSS104J.
 - PARTS NO. OF TRANSISTORS ARE AS FOLLOWS.
G1 2SC2814/4-5/-X G2-G3 2SC2412K/R/-X
G4-G5 DTA114YKA-X



■ Mic section



NOTES 1. VOLTAGES ARE DC-MEASURED WITH A DIGITAL VOLT METER OR OSCILLOSCOPE WITHOUT INPUT SIGNAL.
CONDITION --- CD STOP MODE

2. UNLESS OTHERWISE SPECIFIED.
ALL RESISTORS ARE 1/10W ±5% METAL GLAZE RESISTOR.
ALL CAPACITORS ARE CERAMIC CAPACITOR OR MYLAR CAPACITOR.
ALL RESISTANCE VALUES ARE IN OHM(Ω).
ALL CAPACITANCE VALUES ARE IN #F(P=pF).
ALL INDUCTANCE VALUES ARE IN #H(m=mH).
ALL E. CAPACITORS ARE SHOWN IN THE FORM OF CAPACITANCE(#F)/RATED VOLTAGE (V).

➡➡➡ MIC SIGNAL

TO CN914 & CN913 OF
FMC-026-1 (PAGE 2/9)

5

4

3

2

1

A

B

C

2-8

D

E

F

G

VCD section

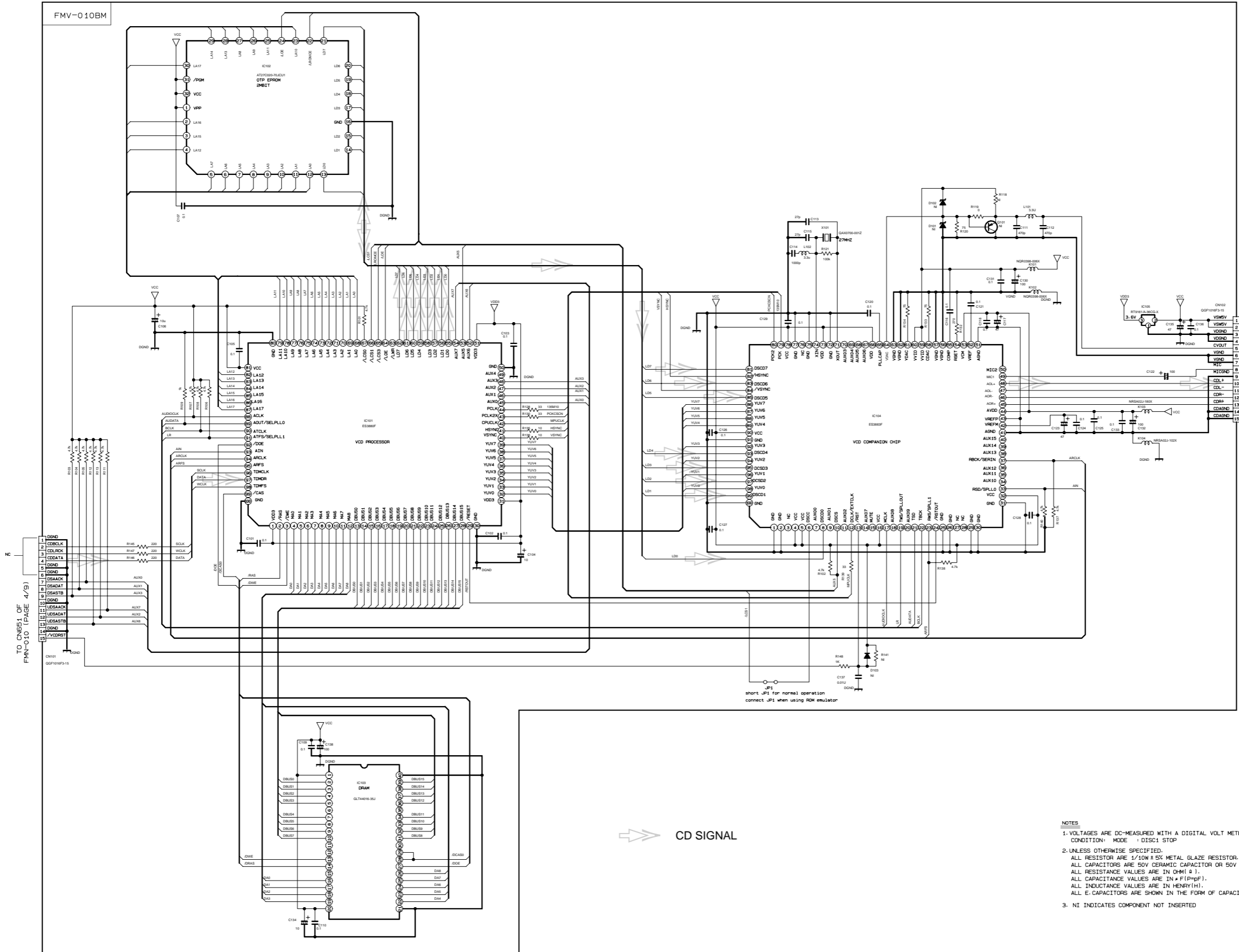
5

4

3

2

1



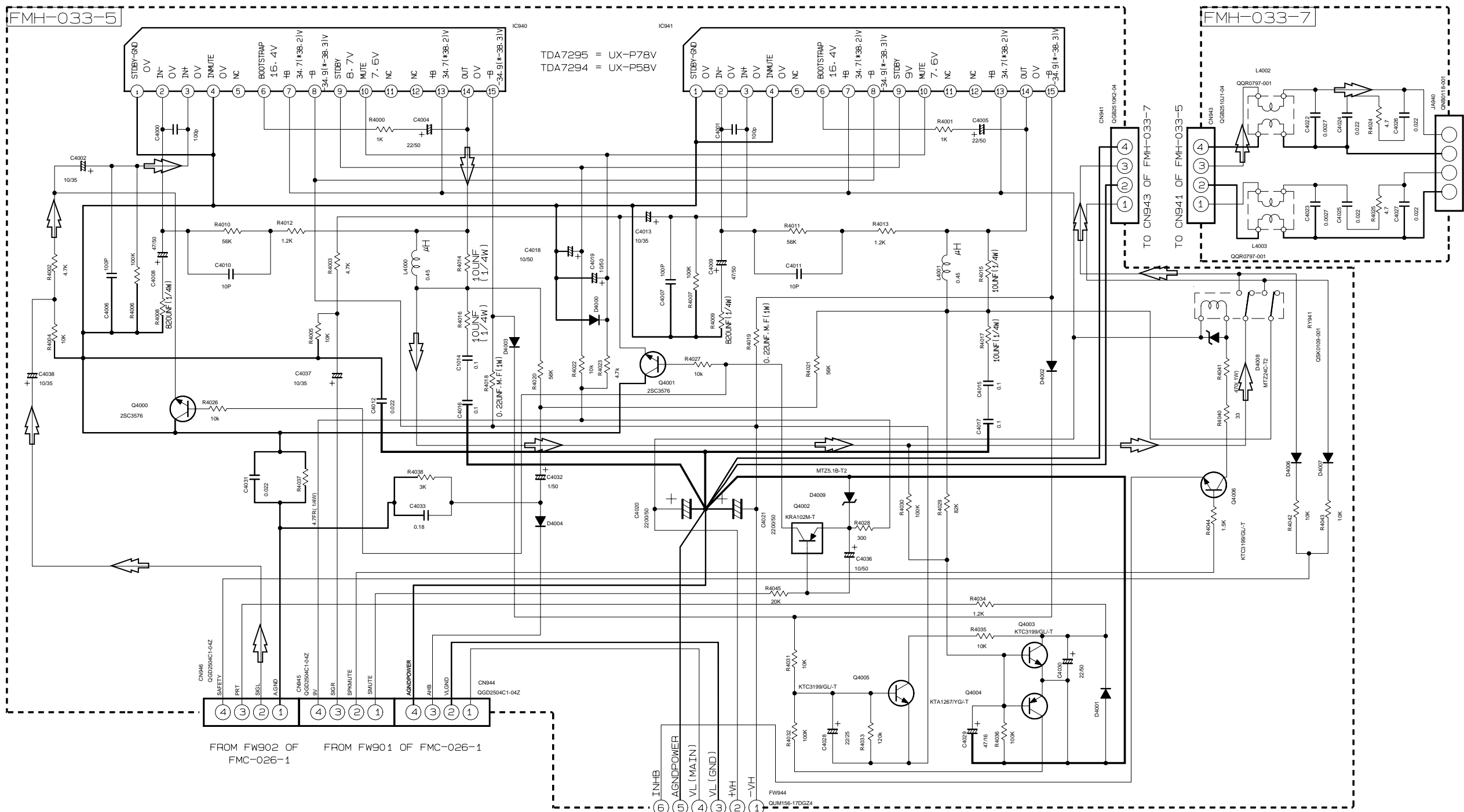
TO CN5E1 OF FMV-010 (PAGE 4/9)

TO CN504 OF FMC-026-1 (PAGE 2/9)

CD SIGNAL

- NOTES
1. VOLTAGES ARE DC-MEASURED WITH A DIGITAL VOLT METER CONDITION: MODE 1 DISC1 STOP
 2. UNLESS OTHERWISE SPECIFIED: ALL RESISTOR ARE 1/10W ± 5% METAL GLAZE RESISTOR. ALL CAPACITORS ARE 50V CERAMIC CAPACITOR OR 50V MYLAR CAPACITOR. ALL RESISTANCE VALUES ARE IN OHM (Ω). ALL CAPACITANCE VALUES ARE IN PICO(FpF). ALL INDUCTANCE VALUES ARE IN HENRY(H). ALL E-CAPACITORS ARE SHOWN IN THE FORM OF CAPACITANCE(μF)/RATED VOLTAGE (V).
 3. NI INDICATES COMPONENT NOT INSERTED

Subwoofer section



NOTES

- VOLTAGES ARE DC-MEASURED USING A DIGITAL VOLTMETER OR AN OSCILLOSCOPE WITHOUT INPUT SIGNAL CONDITION
- UNLESS OTHERWISE SPECIFIED
ALL RESISTORS ARE 1/8W ± 5% CARBON RESISTOR.
ALL CAPACITORS ARE 50V CERAMIC CAPACITOR OR 50V MYLAR CAPACITOR.
ALL RESISTANCE VALUES ARE IN Ω(M),
ALL CAPACITANCE VALUES ARE IN μF(P=PF).
ALL E. CAPACITORS ARE SHOWN IN THE FORM OF CAPACITANCE(μF)/RATED VOLTAGE (V).
ALL DIODES ARE 1SS133-T2 TYPE UNLESS SPECIFIED
Ⓜ POLYPROPYLENE CAPACITOR
Ⓜ 50V ± 5% MYLAR CAPACITOR OR 50V ± 5% THIN FILM CAPACITOR
- THOSE PART WITH BRACKET IS NOT USED.
FOR RESISTOR, IT WOULD BE A SHORT.
FOR CAPACITOR, IT WOULD BE AN OPEN.

5
4
3
2
1

A B C 2-10 D E F G

Printed circuit boards

■ Main board

■ Tuner board

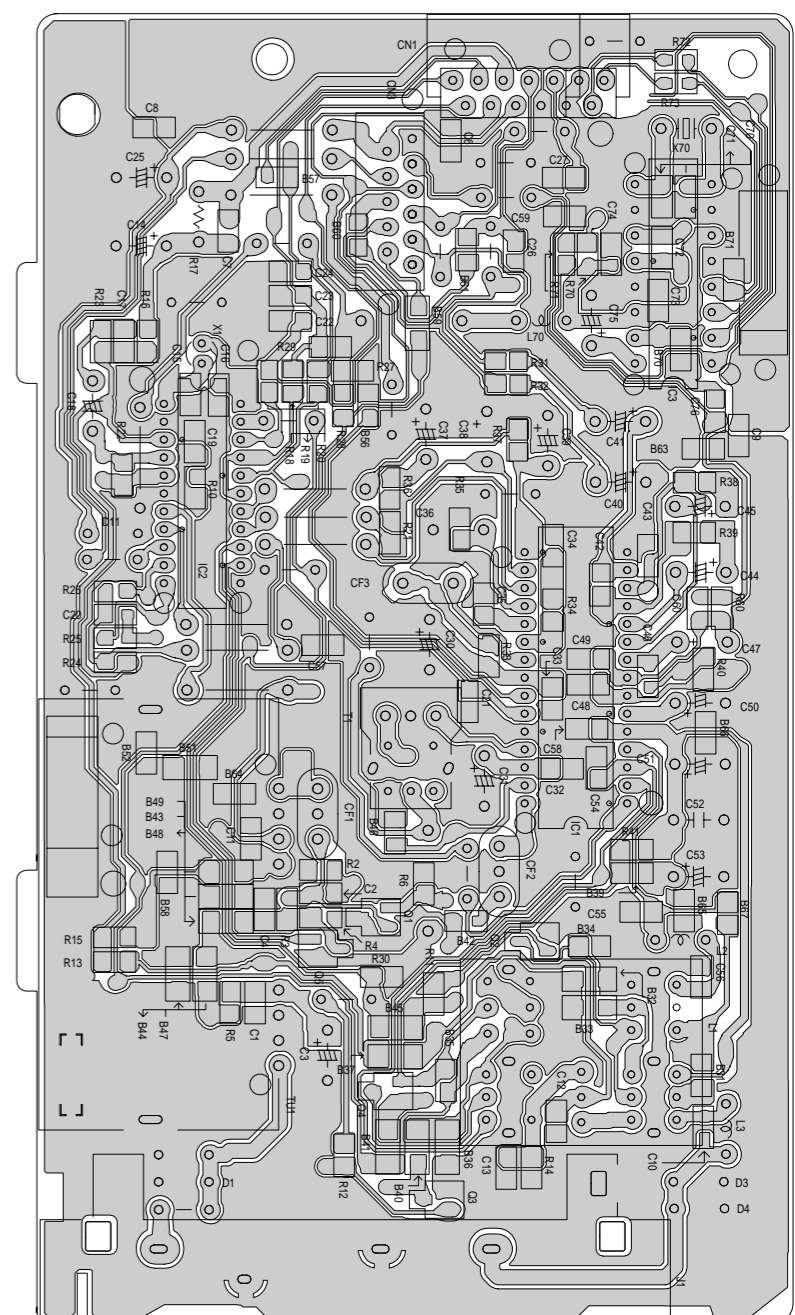
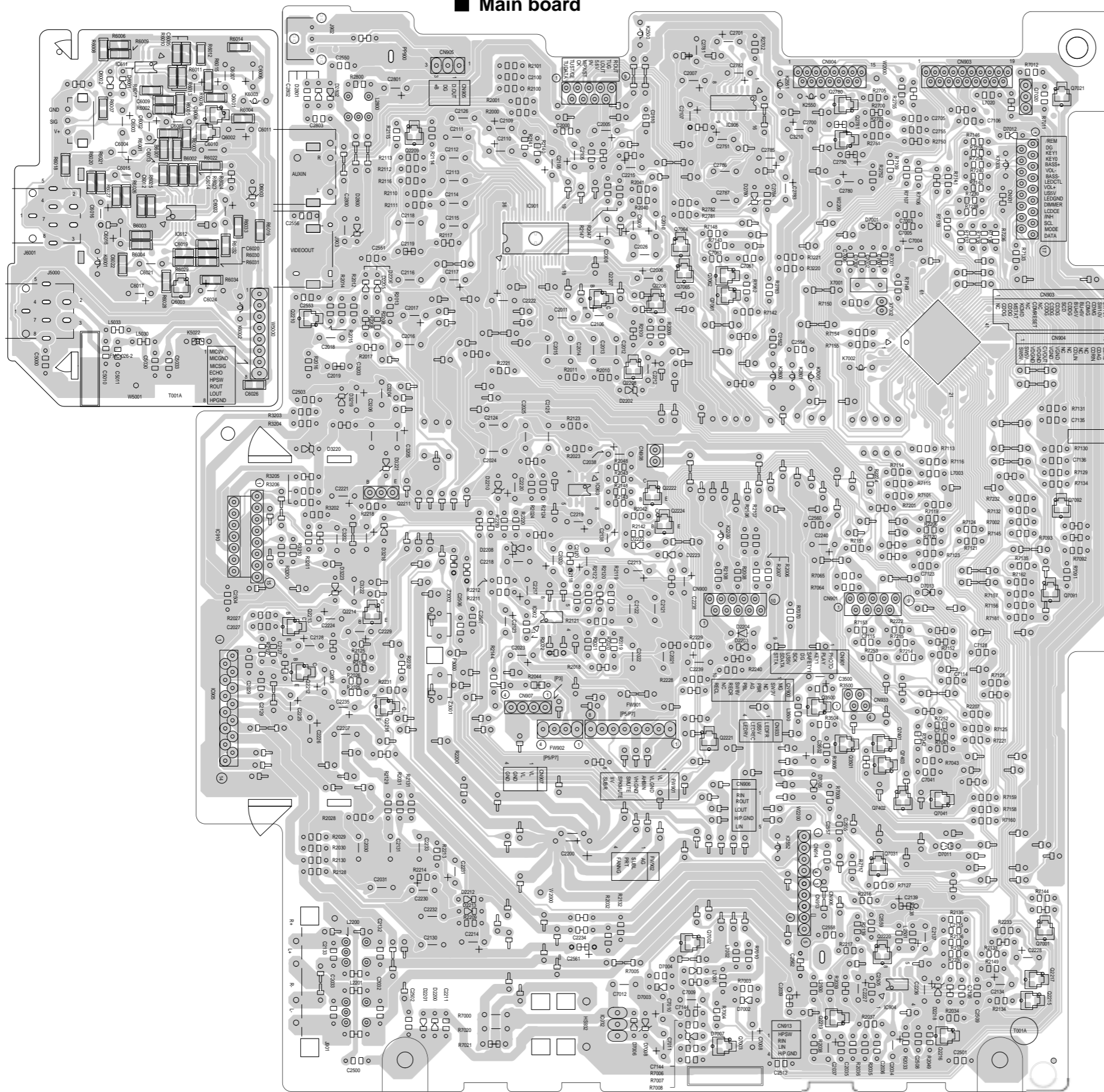
5

4

3

2

1



A

B

C

D

E

F

G

■ Front board

